

Middletown Materials, LLC

10 Adel Drive
Newark, DE 19702
302.453.8286



October 7, 2020

State of Delaware
DNREC – Division of Air Quality
100 W. Water Street
Suite 6A
Dover, DE 19904

APC-2002/0738-Operation
(Amendment 10)

Attn: Whitney Diehl

Re: Middletown Materials – Air Permit
Temporary Relocation of Grinder
APC-2002/0738-C/O (SM)

Middletown Materials is requesting to relocate GCS-¹⁶~~10~~ – Norberg Crusher associated with the above Air Quality permit to the following sites:

The approximate address is:

Everett Meredith Middle School
(New School Project)
504 S. Broad St.
Middletown, DE 19709

Heritage Concrete
376 Holly Oak Lane
Cheswold, DE 19936

The grinding operation will take place onsite. The attached map shows the location of the proposed grinding. If you have any questions, please do not hesitate to call me at 302.893.9891.

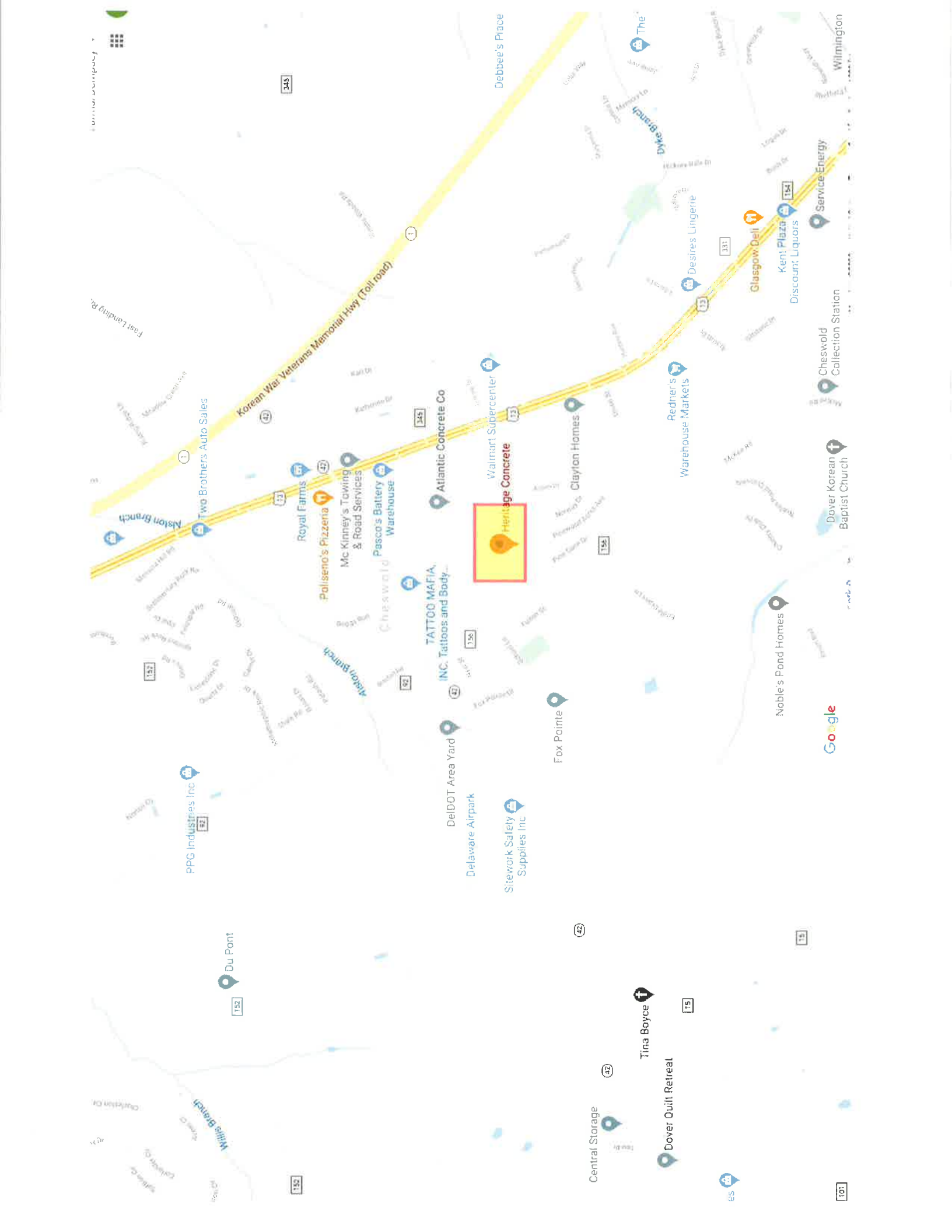
Please find enclosed a check for \$500.00. This consist of the \$175.00 Amendment Fee and \$325.00 Advertisement Fee.

Best Regards,



Barry J. Baker

Attachments: EMSS - Grinder Location Map
Heritage Concrete – Cheswold Map
Check



Korean War Veterans Memorial Hwy (Toll road)

Heritage Concrete

Atlantic Concrete Co

TATTOO MAFIA, INC. Tattoos and Body

DeDOT Area Yard

Delaware Airpark

Sitecore Safety Supplies Inc

Fox Pointe

Central Storage

Tina Boyce

Dover Quilt Retreat

Noble's Pond Homes

Dover Korean Baptist Church

Cheswold Collection Station

Service Energy

Wilmington

PPG Industries Inc

Du Pont

Two Brothers Auto Sales

Royal Farms

Pollenzo's Pizzeria

McKinney's Towing & Road Services

Pasco's Battery Warehouse

Cheswold

Atlantic Concrete Co

Walmart Supercenter

Clayton Homes

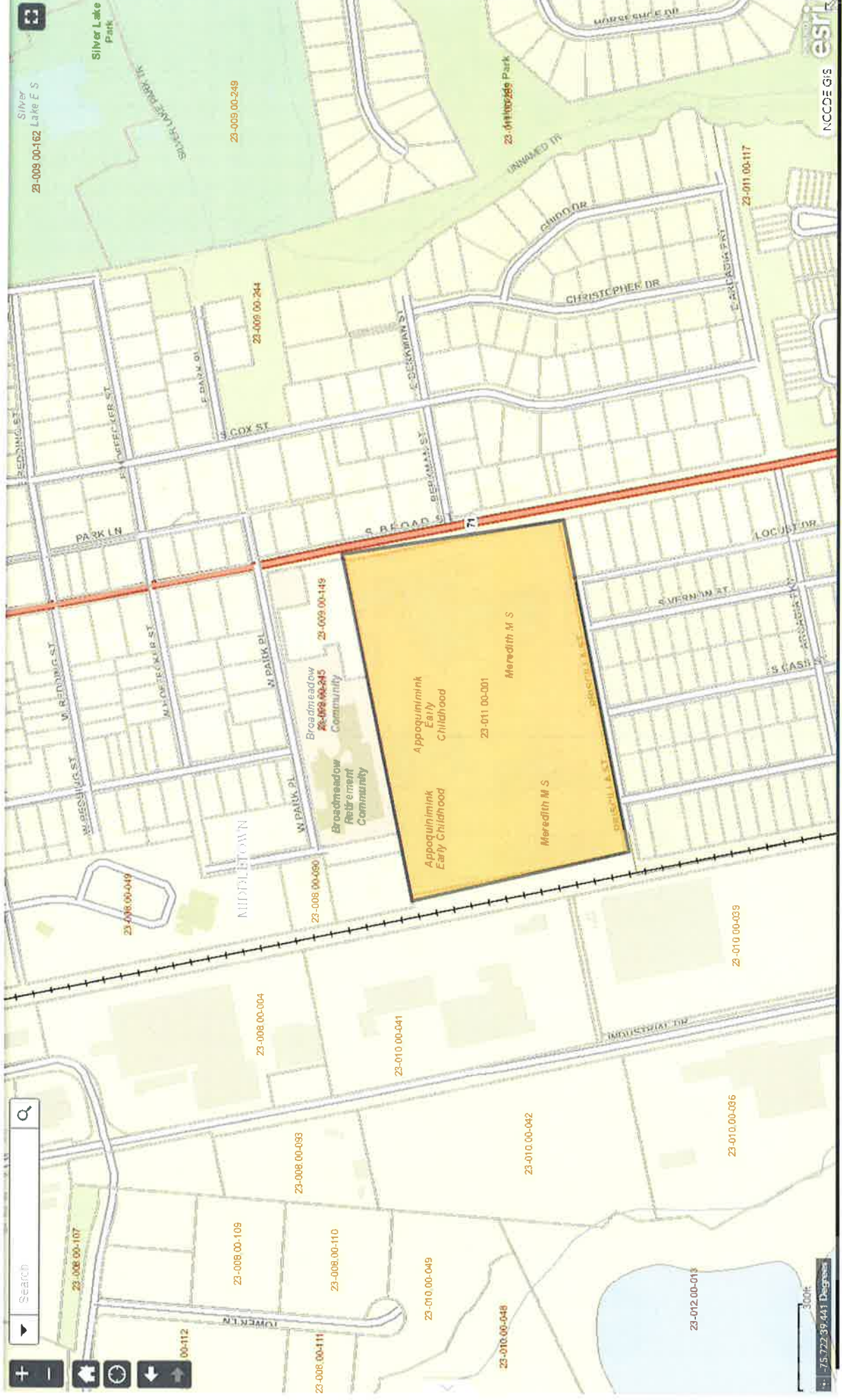
Redner's Warehouse Markets

Glasgow Deli

Kent Plaza

Discount Liquors

Wilmington



Search



300ft

-75.72239441 Degrees

NCCDE GIS

